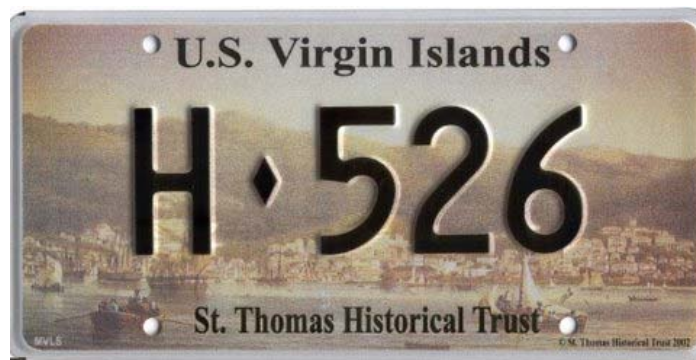


Show your support for historical preservation in the U.S. Virgin Islands with **St. Thomas Historical Trust License Plates**



Use of the Fritz Melby painting is through the generosity of the Paiewonsky family and MAPes MONDe Ltd.

These attractive plates are based on Fritz Melby's 1850 painting of St. Thomas harbor. Through your contribution, and every time you drive your car, you'll show your support for the Trust. Profits from the sale of these license plates will allow the St. Thomas Historical Trust to pursue its mission:

**To identify, protect and preserve the historic identity, structures and sites, and cultural heritage of St. Thomas through education, advocacy and promotion.**

PLEASE COMPLETE THIS FORM AND MAIL, EMAIL, OR DELIVER TO THE MUSEUM WITH YOUR CHECK, MONEY ORDER OR CREDIT CARD.

Plates can be legally registered at the VI Department of Motor Vehicles. The DMV will charge a one-time \$10 plate transfer fee for the Numbered Series Plates & a yearly \$30 fee for Personalized Plates. Allow 3-6 weeks for delivery: Please use one order form for each set of plates. Make checks or MO payable to *St Thomas Historical Trust*

Name: \_\_\_\_\_

Address: \_\_\_\_\_

City: \_\_\_\_\_ State/Zip \_\_\_\_\_

Evening phone: \_\_\_\_\_ Day phone \_\_\_\_\_

Email: \_\_\_\_\_

- I will register my plates in the Virgin Islands
- I am purchasing these plates as a souvenirs
- I am a MEMBER  I am a NON-MEMBER
- I want to become a member of the St. Thomas Historical Trust. Membership is \$25 Individual, \$50 Family, \$75 Business, \$100 Sponsor, \$250 Benefactor, \$500 Patron, \$5000 Life-time. Circle one.

Credit Card: Master Card  Visa  Discover

Number: \_\_\_\_\_ Exp: \_\_\_\_\_

3 Numbers on the back of your card: \_\_\_\_\_

Send me a set of numbered series plates. Numbered plates commence with H for Historical. \$45 for Trust members and \$50 for non-members, plus \$6.00 for shipping and handling. Total: \$51 for members and \$56 for non-members.

Send me a replacement plate. Total \$25

Send me a set of personalized plates. Select up to seven (7) characters and numbers only. No symbols allowed except for a dash (-). No offensive wording is allowed. Leave a blank to indicate a space. \$90 for Trust members or \$100 for non-members, plus \$6.00 for shipping and handling. Total: \$96 for members or \$106 for non-members.

1st choice \_\_\_\_\_

2nd choice \_\_\_\_\_

3rd choice \_\_\_\_\_



ST. THOMAS HISTORICAL TRUST, PO BOX 6707, ST. THOMAS, VI 00804  
 (340) 774-5541 FAX SAME. [execdirector@stthomashistoricaltrust.org](mailto:execdirector@stthomashistoricaltrust.org)  
[www.stthomashistoricaltrust.org](http://www.stthomashistoricaltrust.org)